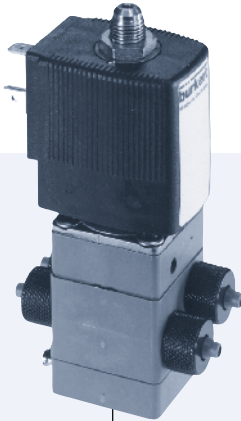
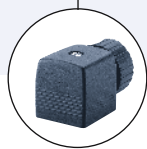


4/2-way Solenoid Valve for pneumatic systems



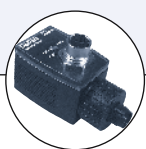
Type 5420 can be combined with...



Type 2508
Cable plug



Type 1078
Timer unit



Type 2512/2511
ASI cable plug



Type 2000
Angle-seat valve

- Compact design
- Push-over solenoid coil
- Exhaust air can be regulated
- Tube, threaded and sub-base connections
- Servo-diaphragm seat discs

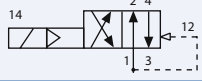
The Type 5420 is a pilot-controlled 4-way seat valve with servo-diaphragms. A minimum differential pressure of 2.5 bar is needed for switch-over. The valve can be mounted on two-channel manifolds with a common pressure supply.

Technical data	
Orifice	DN 3.0 mm
Body material	Polyamide
Valve internals	Stainless steel, plastic
Seal material	NBR
Media	Neutral media
Media temperature	-10 °C to +60 °C
Ambient temperature	Max. +55 °C
Voltage tolerance	±10%
Duty cycle	100% continuous rating
Electrical connection	Tag connector acc. to DIN EN 175301-803 (previously DIN 43650) Form A for cable plug Type 2508
Protection class	IP 65 with cable plug
Installation	As required, preferably with actuator upright

Power consumption		
Inrush	Hold	
AC [VA]	AC [VA/W]	DC [W]
11	6/2	2

Ordering chart for valves (other versions on request)

Corrosion-resistant body in polyamide, with coil AC10 (32 mm), 2W, seal material NBR, without cable plug

Circuit function	Port connection 1 and 3	Port connection 2 and 4	Orifice [mm]	Q _{Nn} value air [l/min]	Pressure range [bar]	Item no. per voltage/frequency [V/Hz]		
						024/DC	024/50-60	230/50-60
G 4/2-way valve 	G 1/8	G 1/8	3.0	200	2.5 - 10	134 622	134 623	134 625
	Hose fitting 6/4	Hose fitting 6/4	3.0	200	2.5 - 10	134 630	134 631	134 633
	Flange for manifold	G 1/8	3.0	200	2.5 - 10	134 634	134 635	134 637
	Flange for manifold	Hose fitting 6/4	3.0	200	2.5 - 10	134 638	134 639	134 641

A pressure difference of 2.5 bar is necessary for switch-over.

Please note that the cable plug has to be ordered separately, see separate datasheet for Type 2508.

i Further versions on request

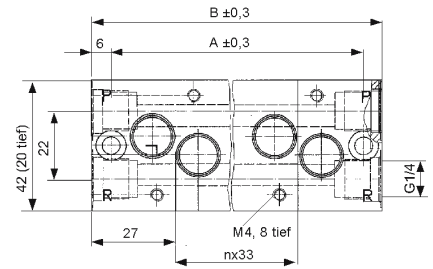


Approvals
 EEx m II C T5

Ordering chart for accessories (manifold). Expandable manifolds from light metal (aluminium)

Manifold	Hole spacing A [mm]	Total length B [mm]	Item no.
2 valves	75	87	005 356
3 valves	108	120	005 357
4 valves	141	153	005 372
5 valves	174	186	005 373
6 valves	207	219	005 374
8 valves	273	285	006 553

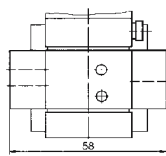
Accessories for manifolds	
Silencer	005 424
Blanking plug for unused ports 1 or 4	005 390
Covering plate, complete, for unused valve positions on the manifolds	005 432
Connector nipple with O-ring for connecting manifold	005 049



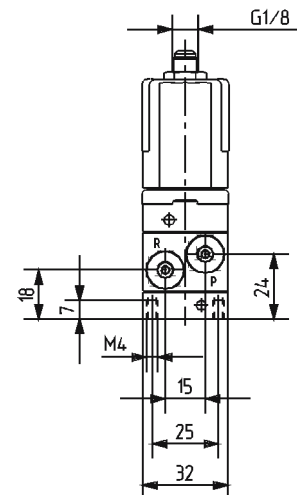
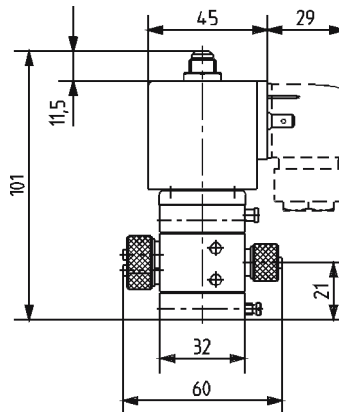
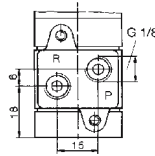
Dimensions [mm]

Tube connection for semi-soft plastic tubes (outer-Ø 6 mm, inner-Ø 4 mm).

For battery mounting, the union nuts on the Ports 1 and 3 are replaced by O-rings (10 x 2).



Thread port G 1/8



To find your nearest Bürkert facility, click on the orange box → www.burkert.com

In case of special application conditions, please consult for advice.

We reserve the right to make technical changes without notice.
 © Christian Bürkert GmbH & Co. KG

0801/1_EU-en_00891717